



Department of Environment and
Natural Resources
Urban Biodiversity Unit &
Cleland Wildlife Park

Autumn at Cleland

Biodiversity Walks along the Cleland Conservation Park
Perimeter Track

EXPERIENCE THE DELIGHTS OF AUTUMN AT CLELAND...

Take a walk along the Perimeter track with **experienced bushwalking guides** from the Urban Biodiversity Unit and education staff from Cleland Wildlife Park.

WHAT: There will be **2 easy natural history walks** full of interesting Cleland tidbits while pointing out local flora and fauna.

WHEN: Walks go from 9-10.30 and 11.00-12.30, **Tuesday 19th April 2011.**

WHERE: Meet in the **Cleland Wildlife Park carpark** (look for the Backyards for Wildlife banner).

RSVP: **Bookings are essential**, please phone 8339 2769.

Please bring proper attire for the weather (e.g. raingear, warm clothes), water and snacks, and sturdy walking shoes.



This series of walks is delivered by the Urban Biodiversity Unit in partnership with the Cleland Wildlife Park Education Program; both are part of the South Australian Department of Environment and Natural Resources.



BACKGROUND

The Cleland area spans from Mt Lofty Summit to Waterfall Gully and has a rich history of Aboriginal use and European settlement. The Kurna people came from the plains to use the hills face up to the stringybark vegetation (~450m) seasonally; while the Peramangk people occupied the eastern slopes. The location of Cleland Wildlife Park occurs at this boundary.

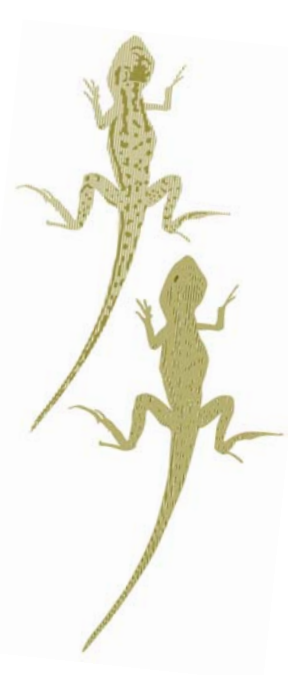
Vegetation on the higher slope, where the Wildlife Park is located, is predominantly stringybark forest with a complex understorey of small trees and shrubs. In the 1830s, large forest trees native to the area were felled, leaving a network of trails that were used to haul timber from the hills to the city. Some of these trails are still in use today.

The Wildlife Park has been a major tourist attraction in South Australia since 1967. Nestled within the natural bush setting of Cleland Conservation Park and adjacent to Mount Lofty Summit, the park provides 35 hectares of open bushland habitat where visitors can interact with Australian wildlife.

The walk will go past the dingo enclosure as well as opportunities to view some of the macropods from South Australia including the yellow-footed rock-wallaby, western grey kangaroo, and swamp wallaby.

Fire is also very important to stringybark woodlands, and we will stop at prescribed burn fire scars past and present to discuss how and why.

Feel free to spend the day and see what Cleland has to offer. After the free biodiversity walk you can have lunch or coffees in the café; however, entry into the rest of the Wildlife Park does require payment of the park entry fee.



For further information:

Cleland Wildlife Park

Mount Lofty Summit Road

Crafers, South Australia

Phone: 8339 2444

Fax: 8370 9623

Email: clelandwildlifepark@saugov.sa.gov.au

www.clelandwildlifepark.sa.gov.au

or become a fan on facebook.

*Experience the wonders of
autumn in the bush!*

Get Involved!

Become a Friend of the Urban Forest! Join at www.milliontrees.com.au, follow the Urban Biodiversity Unit on Twitter and become a fan on facebook. These walks are supported by the Urban Biodiversity Unit's Backyards for Wildlife Initiative. For more information please visit: www.backyards4wildlife.com.au.

Friends of Cleland Conservation Park have regular weekend activities including planting, social functions and fundraising with a junior section associated with the group. Contact: Veronica Sullivan, ph. 8390 1798
