



# GIRL GUIDES SA FRIDAY FRENZY

1 August 2025

## UPDATE FROM STATE COMMISSIONER TEAM

Hi Everyone,

I hope everyone is staying warm and dry. The rain has been welcome, and I don't know about you, but I am feeling refreshed and invigorated for the new term.

There are several big events happening starting this weekend and I want to encourage everyone to come along and to encourage the youth members to take part. Be it at one of the upcoming camps, trainings or how about a theatre production put on by the amazing Carry-on Guides team.

Thank you to those that have reached out for a chat. We have now started connecting with teams on the Boards strategic plan, and we would love to hear from other units and regions. We are happy to come to you, just let us know when.

Please remember no suggestion or question is unimportant and chances are a few others have the same question or idea. But if we don't know we can't do anything about it. And if you have raised it in the past and nothing happened, please raise it again. We haven't heard it.

Stay warm and hopefully we will see you on the weekend as we celebrate everything about Douglas Scrub.

Kind Regards

Bev Severin

State Commissioner

The screenshot shows a window titled "GGSA SharePoint Access". Inside, a red 'X' icon is next to the text: "TO ACCESS SHAREPOINT YOU NEED TO GO TO THIS WEBSITE:". Below this is the URL: [HTTPS://GIRLGUIDESSAUST.SHAREPOINT.COM/SITES/GGSAREOURCES](https://girlguidessaust.sharepoint.com/sites/ggsaresources). Further down, it lists the login details: "USER NAME: RESOURCES@GIRLGUIDESSA.ORG.AU" and "Password: Members21". A blue callout box with a question mark icon contains the text: "The above Username and password works with the above website URL but not others". A mouse cursor is pointing at the bottom right of the window.

# POSITIONS VACANT



If anyone has a position they need to fill, just send us the detail to : [newsletter@girlguidessa.org.au](mailto:newsletter@girlguidessa.org.au). You never know if there is someone that is looking for a new challenge in another unit or team.

## **Region Manager Eastern Region**

We are seeking expressions of interest for someone (or a team) who is interested in the Region Managers position for Eastern Region. The role is for a three year period.

A challenging and rewarding position within GGSA as a role model for Managers, Leaders, and girls. The Region Manager (RM) is responsible for leading the Region Team. The RM provides support, guidance, feedback, and motivation to ensure a focus on the importance of the delivery of the Australian Guide Program (AGP), Learning & Development of adults and growth and retention for the benefit of Youth Members, seeing girls and young women discover their potential as leaders of their world.

She will build strong connections between the Region Team, Leaders, girls, and the Community to ensure the Region objectives are successful and support the State Strategic objectives.

Please email or call Bev at [sc@girlguidessa.org.au](mailto:sc@girlguidessa.org.au) if you would like to find out more

## **Program Team members**

We are seeking expressions of interest from anyone that would like to be part of the Program team to deliver programs.

You may have an idea for one event or you may want to participate in this group to create events.



## **YOUNG WOMEN'S FORUM NOMINATIONS 2025**

Do you have a passion for Guiding?  
Want to shape the future of Girl Guiding  
in Australia?

Interested? or know someone who should be  
considered complete the [application form](#) and  
send it to [sc@girlguidessa.org.au](mailto:sc@girlguidessa.org.au)



Are you passionate about the international aspects of Girl Guiding/Girl Scouting? The **Olave Baden-Powell Society (OB-PS)** supports WAGGGS programs that empower girls and young women globally through leadership, advocacy, health, safety, and international opportunities.

Become a member through:

- A one-off donation or bequest
- [Associate Membership](#)
- [Young Membership \(under 35\)](#)
- Or you can gift a Membership!

**OB-PS Australia currently has Young and Associate Memberships available to gift** to adult members of State Guiding organisations who are interested in international Guiding.

*To express interest or learn more, get in touch today! Download brochure [HERE](#).*

*Robinette Emonson, National Coordinator - [obpsaustralia1@gmail.com](mailto:obpsaustralia1@gmail.com) or 0417 757 635*

## Be True to You

As you set out on life's road  
unsure of the path you'll go,  
the most important thing you can do  
is to always be true to you.

Always remember who you are  
in moments of struggle or fear.  
Never forget or give up on  
the hopes and dreams you hold dear.

There will be setbacks and rejection  
and moments of failure too,  
but you must overcome any frustration  
to achieve the potential of you.

Don't forget to smile, or laugh,  
or to live in the present;  
no matter where life takes you  
make every memory pleasant.

As you travel along your journey,  
know that you're never alone  
and I'll always be here for you  
should you need the comfort of home.

By Author Unkown



# PROGRAM UPDATE



**EARTHKEEPERS 26-28 SEPTEMBER AT DOUGLAS SCRUB.**

Earthkeepers is an exciting and fun environmental camp. There is drama and mystery! You are invited to become an Earthkeeper in the magical setting of a 'Lab' that belongs to a mysterious character known as EM.

To register click [HERE](#).



**Camp Amity**  
for girls with disabilities



**CAMP AMITY 10-12 OCTOBER AT DOUGLAS SCRUB.**

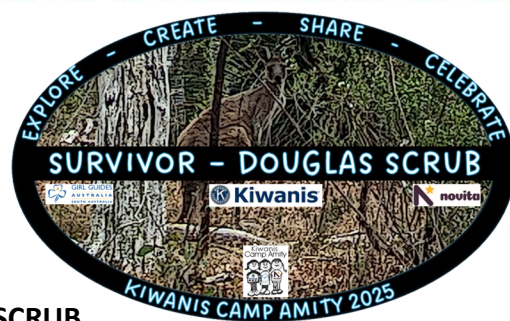
**THIS YEAR'S THEME IS 'SURVIVOR'**

Camp Amity is a fun weekend for children with disabilities which gives attendees the opportunity to gain new friends, confidence and the chance to experience Guiding.

Guides will provide a valuable service to others, learn about disability and enjoy time with other Guides from across the state.

Children attending will be clients of Novita Children's Services and training and support will be provided so you can learn new skills.

To register click [HERE](#).



**DO YOU HAVE GIRLS  
8-11 WHO MIGHT BE  
INTERESTED?**

**CLICK [HERE](#) TO  
REGISTER YOUR  
INTEREST.**



**2025  
CUBOREE**  
**JOURNEY TO ADVENTURE**  
**24-26 OCT 2025**  
**@ WOODHOUSE**



# INTERNATIONAL UPDATE



## JOTA/JOTI

17-19 October 2025

At time of FF submission – no information had been received from GGA regarding Jota/Joti 2025 – however if you have any ideas to share or would like assistance, please do not hesitate to contact me.

## World Thinking Day 2026

Calling all WTD fans! Organisers!

I am floating the idea of a State Event for 2026 – however I cannot do this alone!

If you would like to be part of a small group of people who could consider organising a state event for 2026 – please contact me.

Gauging interest at the moment.

Debra Jakes, State International Manager - [International@girlguidessa.org.au](mailto:International@girlguidessa.org.au)

## JOIN US FOR OUR CHALET'S INTERNATIONAL FRIENDSHIP WEEK

OUR CHALET, ADELBODEN  
17<sup>TH</sup> TO 27<sup>TH</sup> SEPTEMBER 2025

Explore Switzerland's culture, towns,  
and nature in this action-packed  
week designed for making memories  
with friends new and old!



### WHO IS THIS EVENT FOR?

- ✓ Adults aged 18+
- ✓ All genders welcome
- ✓ No high level of physical fitness required
- ✓ Guiding/Scouting membership NOT required
- ✓ Perfect for individuals, couples, friends, Rover/Ranger groups, and Trefoil groups. Ideal for inter-generational travel!
- ✓ Anyone who wants to explore Switzerland with an exciting programme and mix with other people from around the world!

For more info or to book online, visit:  
<https://worldcentres.waggs.org/event/international-friendship-week-2025/>

# Are you a social media user aged between 14 and 17 years? Or do you know one?

**WE HAVE A  
STUDY FOR  
YOU!**

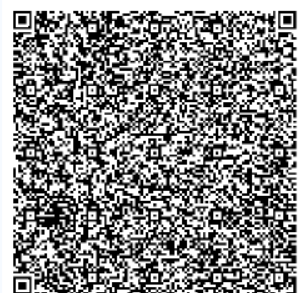
We're researchers from the College of Education, Psychology, and Social Work at Flinders Uni, and we want to better understand social media use and wellbeing.

## Who are we looking for?

- Participants must be aged 14-17 years, be a current Australian resident, have access to a phone or email account, and be fluent in English.

## What do I have to do?

- We will ask for your parent's consent first.
- Complete an online baseline questionnaire (~30 minutes).
- Complete 7 days of brief (~5 min) surveys (1 per day) sent to your phone/email.
- **Note: You will be asked questions about how your mental health (e.g., I feel sad or empty), daily mood (e.g., I feel upset), and negative content encountered online (e.g., violence, graphic injury).**



**PARENTS: SCAN THE QR  
CODE TO EXPRESS  
YOUR CHILD'S INTEREST**



## What will I get?

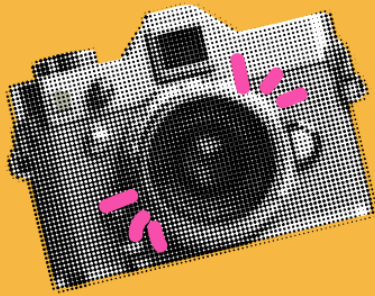
- **\$20** in e-vouchers

This project has been approved by the Flinders University Human Research Ethics Committee (Project ID: 5179)  
Email: [socialmediastudy@flinders.edu.au](mailto:socialmediastudy@flinders.edu.au)



# ROYAL ADELAIDE SHOW

Expressions of Interest are being called for volunteers (individuals or Units) to undertake Parcel Minding duties at this year's Royal Adelaide Show (30 Aug - 7 Sep; 3 shifts per day). If you are available, have great customer service skills, physical ability for the task and can follow the set procedures, we'd love to hear from you. We're also keen to hear from anyone who would like to be Gabi Guide. Please [CLICK HERE](#) to complete the Expression of Interest.



## TAKE A PHOTO!

Have you got Honour Boards?  
Send in a photo of any boards in your hall for our to help fill in some gaps. Please send your photos to : [rebekah@girlguidessa.org.au](mailto:rebekah@girlguidessa.org.au)



## SOCIAL MEDIA COMPETITION

Please submit 6 sets of photos and videos with bullet points over the next 6 months for our social media pages.

Each unit that sends in 6 posts will be entered into a draw to win a \$500 GGSA Voucher, to be drawn on Feb. 2, 2026.

Start sending your entries to : [office@girlguidessa.org.au](mailto:office@girlguidessa.org.au)