



GIRL GUIDES SA FRIDAY FRENZY

Friday 24 April 2026

FROM THE STATE COMMISSIONER & STATE EXECUTIVE OFFICER

Hi Everyone,

Welcome to Term 2 – I hope everyone has had a chance to rest and reset after a busy start to the year.

To those who helped with Camp Amity – thank you! This is always an amazing camp, and everyone who is part of it makes a big difference to both the participants and the opportunities given to our own youth members.

As we head into the new term, there are a few important focus areas and opportunities I'd like to highlight:

ANZAC Day – Saturday 25 April

ANZAC Day is fast approaching, and we are, as always, thankful for the passion that everyone brings to this service. From those involved in the Youth Vigil and so many different activities around the state, we say thank you and don't forget to share this with us. We can unfortunately only attend a few of these activities, but we love to see what everyone is doing. Thank you for supporting Guides to understand Remembrance, Respect, and Service.

Douglas Scrub Weekend – 22–24 May 2026

A reminder about the upcoming Douglas Scrub weekend. Douglas Scrub will only have Girl Guides on the property and we can't wait to see everyone there.

For Guides aged 13–17 we have an opportunity to come along and camp with girls their own age – they may have met them at other activities this year.

The program will have broad brush activities, but the Girls in Patrols decide what and how they will achieve this. They will also cook their own meals. This is a fantastic opportunity for outdoor adventure, leadership, and connection in a girl-led environment. Please encourage interested Guides and families to review and register.

Girl Guides Learning (GGL) Training

There are several upcoming training opportunities available:

- **Child Safe Child Friendly (CSCF) refreshed training** – we strongly encourage all Leaders to do this updated module to ensure we continue to provide safe, inclusive environments for our members. This training will become compulsory, so why not jump in and do it now? We are just working out how we can offer this training to those members who do not have access to online training.
- **Project Compass** – is now online and is an opportunity to offer something new to the youth members
- **Neurodiversity Introduction is available** – have you been able to complete this yet?

We have also included a section on some Child Safe Child Friendly questions that have come up – let us know if you would like clarity on anything, and we can include that as well. We have also included something special in delivering the AGP. As always, if you have any questions, please reach out to us.

Kind regards

Bev + Mel

State Commissioner and State Executive Officer



There's still time to book your Unit/Region
in for our

MEMBERS ONLY WEEKEND

There are still plenty of campsites, dorm rooms
and cabins available.

Please support this weekend & enjoy a great
time with Guides and Leaders from all over.

properties@girlguidessa.org.au or phone 8418 0900

GIRL GUIDING IS AWESOME!

DOUGLAS SCRUB

MEMBERS ONLY WEEKENDS

22 - 24 MAY | 18-20 SEPT

These weekends are reserved exclusively for GGSA members for Unit/Regions to camp (indoor & outdoor) without public guests on site.

Indoor camping \$20 pp/night | Outdoor camping \$10 pp/night | Cabins from \$140 per night

FREE SHARED USE OF:

- ✓ Cooksheds, BBQs & Trifold shelter
- ✓ Fire pits
- ✓ Climb in the Trees (limited qty)
- ✓ Outdoor games

Douglas Scrub Campground
216 Douglas Gully Road
Bewett Springs 5171

GIRL GUIDES AUSTRALIA
SOUTH AUSTRALIA

Bookings & enquiries: properties@girlguidessa.org.au 8418 0900



 **GIRL GUIDES**
AUSTRALIA
SOUTH AUSTRALIA

SATURDAY
16 MAY

2:45pm for 3:00pm START
GTS Dolphin

43 George Robertson Dve, Largs North

In person or online attendance

Please RSVP via [MyGGSA](#)

Please refer to letter from Board Chair sent 2/4/26

INTERNATIONAL UPDATE



Girl Guiding New Zealand has now launched it's Jamboree website and dedicated Facebook page. Here are the links for you :

<https://girlguidingnz-girlguiding-new-zealand-jamboree-2027.eventsair.site/>

<https://www.facebook.com/share/r/1NnxQHnqT8/?mibextid=wwXlfr>

The website is mostly a shell site, which will be added to over the coming months.

Girl Guides Australia contingent participants will need to register via the GGA (when available) - do **NOT** register directly with GGNZ.



WAGGGS Newsletter - please download [HERE](#)



CHILD SAFE CHILD FRIENDLY

Child Safe Child Friendly FAQ

Can a P2 driver transport youth members?

Under Girl Guides Guidelines, a P2 driver can transport youth members, provided they comply with all conditions of their license.

What the Guidelines Say : where private vehicles are used to transport Youth Members, the driver must ensure the driver holds a current driver's license appropriate for the vehicle being used, and that all license conditions relevant to their class of license are complied with. This explicitly notes that "Probationary/Provisional drivers are only permitted to drive Youth Members in accordance with the license conditions relevant to the state or territory that issued the license."

So, the next question is in SA for a P2 License what are the Passenger Rules : In South Australia, the passenger age restriction (no more than one passenger aged 16–20) applies to P1 license holders under 25 only. This rule does NOT apply to P2 drivers. Once on a P2 license, drivers no longer have the passenger age restrictions. P2 drivers have no specific restrictions on the number of passengers.

Summary

Condition

P2 Driver in SA

Passenger number restrictions



None

Passenger age restrictions



None

Speed limit



100km/h max

Blood alcohol



Zero BAC

Mobile phone



No use while driving

High-powered vehicle (if under 25)



Not permitted without exemption

However, there are two more things to note for everyone transporting youth:

1. Guidelines also state that, where possible, car-pooling should be organised by parents/guardians rather than adult members or volunteers. It's worth keeping this in mind when planning transport.
2. The "No Adult Alone with One Youth Member" Rule - There must not be any occasion in which one girl is alone with one adult. There must always be a minimum of two adults supervising girls at all times. This is a firm baseline – a driver alone with a single youth member is not permitted unless specific exceptions apply.

Exceptions to Travelling Alone with a Youth Member :

No adult in Guiding should travel alone with any individual Youth Member, unless:

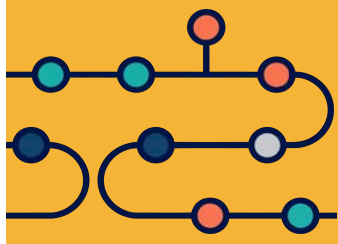
- they are related to each other
- the travel is a routine arrangement that is documented and approved (this documentation and approval must be sent via your Region Manager to the office to be stored on the youth members record)
- the parent/guardian/carer of the Youth Member has agreed to the travel - in writing / electronically ; or
- the travel is essential for the safety or wellbeing of a Youth Member - is advised to your Region Manager

And so on the final question about agreement from parents. It is important that on the approval we note the drivers and specifically for any P2 driver we note this next to their name their licence type. Thereby giving parents all the information for them to make their own decisions.

Also important and good to ensure

- No youth member sits in the front seat
- Everyone is able to wear a properly adjusted seat belt
- Your car insurance covers you transporting the youth members





CONNECTING THE AGP

Hello to all our amazing Leaders and Volunteers!

We're excited to introduce a new series designed to help us connect the AGP dots. For many of you, the Australian Guide Program (AGP) will be very familiar; for others, this may be a helpful refresher. Either way, the AGP is the foundation on which all programs are built.

This series aims to remind and reinforce our shared understanding of where the AGP began, how it has evolved over time, and how we can continue to use it to deliver fun, engaging and meaningful programs for girls and young women across South Australia.

Today, we're starting with what we already know...

Be sure to come back next newsletter as we continue connecting the AGP dots together.

What does 'AGP' stand for?

1. A Great Program
2. Australian Green Party
3. Austrian Generic Power

What??? Of course this refers to the Australian Guide Program! Something we all play and have fun with, within Guiding.

Girl Guiding in Australia is delivered through the Australian Guide Program (AGP), which is a non-formal youth education program based on shared leadership and decision-making at all ages.

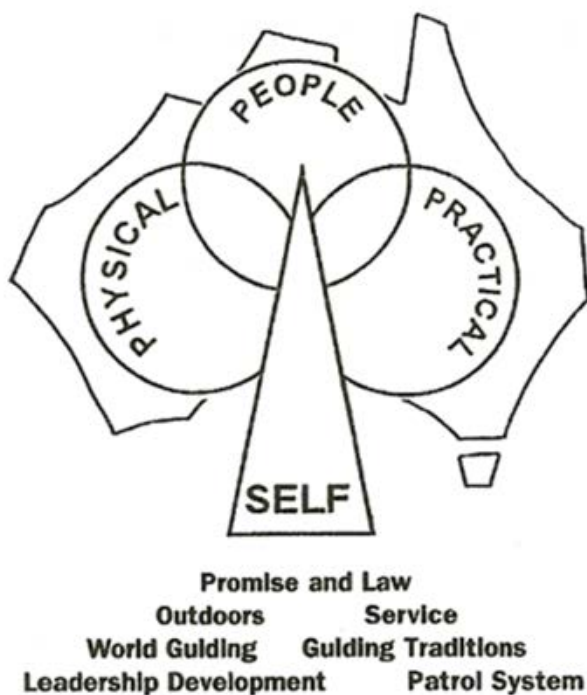
It is our unique way to present opportunities to girls and young women aged 5-17 yrs. It is based on the recognition that all girls are capable of planning and creating their own unique pathway or journey while they are Guides.

Come on the adventure and join us to explore what 'Connecting the AGP dots' might actually mean.

Want to know more? These resources will help!

- GGA Leaders Handbook
https://www.guidelinesforgirlguides.org.au/leaders_handbook/leaders-handbook/
- GGA Youth Badge Book
https://issuu.com/girlguidesaustralia/docs/girl_guide_badge_book

So, you've all heard of and seen the AGP tree right? It looks like this:



What does this all mean and can we connect some dots...

The Trefoil represents the Girl Guide Promise and Law, which gives shape and purpose to everything we do.

The representation of the tree can also be seen in this shape. This reinforces for us the outdoor emphasis of our programs.

The girl is the central focus of our AGP. By providing opportunities for development as an individual (SELF), in the areas of PHYSICAL development, PRACTICAL skills and with working with other PEOPLE, this will assist empowering Guides to shape their own futures and to assist reaching their own potentials. These areas indicated are known as our Elements.

The outline of Australia reminds us that this is truly an Australian program aimed at meeting the needs of girls and young women.

Elements of the AGP

- **Physical** – participating actively; focusing on the environment and the outdoors.
- **People** – making friends and developing long-lasting friendships, developing an understanding and respect for others.
- **Practical** – learning by doing; learning everyday living skills that can be integrated with all areas of life.
- **Self-development** and appreciation of the individual; gaining personal growth through challenges the girl as an individual.

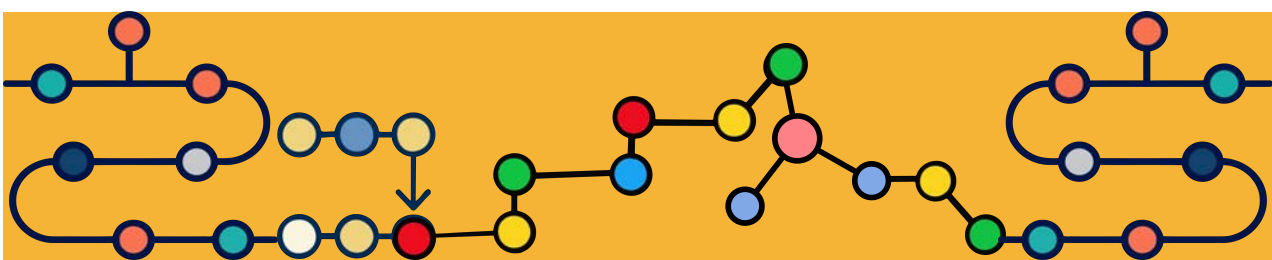
The Fundamentals of the AGP

- keeping the **Girl Guide Promise and Guide Law** is our underlying code of living.
- enjoying the outdoors offers active adventure and awareness of the environment.
- giving **service** encourages a sense of community.
- exploring how **World Guiding** builds peace and understanding.
- sharing in **Girl Guiding traditions** gives a sense of history and belonging.
- experiencing **leadership development** improves skills for life.
- participating in the **Patrol System** develops teamwork skills.

Now hold onto your hats- it's homework time...

Consider or discuss with others how your Unit programs may look, including the aspects of these Elements and Fundamentals. Balanced or skewed a little, or even a lot towards one area of the fundamentals?

May your AGP dots be starting to connect...



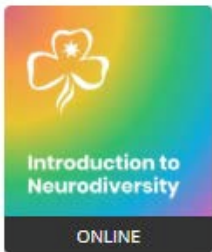


GIRL GUIDES LEARNING

Just a reminder to access Girl Guide Learning via www.girlguides.org.au



There are few new items that have been added:



Introduction to Neurodiversity

Co-designed by a dedicated National Neurodiversity Working Group, this resource reflects the lived experiences of our community and the practical needs of our Units.

Grounded in findings from the 2025 Jamboree—where 30% of Youth Guides self-identified as neurodiverse—this activity provides Adult Members and Volunteers with the foundational knowledge and tools to ensure every Guide is welcomed, supported, and included.



Project Compass Program

Turning Passion into Purpose

Project Compass is a dynamic, girl-led journey that bridges the gap between citizenship and entrepreneurship. Following a **10-stage roadmap**, Guides identify a social cause they care about and build a social enterprise from the ground up.

By running their own business with a social purpose, Guides gain real-world enterprise skills while redistributing their profits back to the community.

Project Compass is:

- **Girl-Led:** Empowering Guides to take the driver's seat.
- **Community-Focused:** Direct impact on local and global causes.
- **Skill-Building:** Developing entrepreneurial and "future-ready" mindsets.
- **Curriculum-Aligned:** Mapped directly to the Australian Primary and Secondary curriculum.



Child Safe, Child Friendly (CSCF) for Adults in Guiding 2026-2027

Girl Guiding in Australia (GGiA) is Child Safe Child Friendly. Child Safe Child Friendly (CSCF) means girls feel and are welcome & safe when they are participating in Girl Guide activities.

As an Adult in Guiding (Adult Members, Volunteers and Employees), it is crucial that you understand how GGiA fosters a Child Safe Child Friendly environment.



We have some new items in the shop and restocked uniform that will sell out quickly! All available online (<https://guideshopsa.myshopify.com/>) or in-store.



Tween Girls Size 12 - back in stock



Capybara Birthday Badge - \$1.20



Soft-shell Jackets \$79.95



Hoodie - \$69.95

Don't forget to get your ANZAC Badges
Cloth - \$1.60
Metal - \$6.80



LEARNING & DEVELOPMENT NEWS

Please make sure that you use the correct email address when contacting the L & D Manager Charlotte Firth. It seems that several people have been using the L & D team Teams email address – this email address is only used by the L & D team when running online training and is not a monitored email. Please only use learning@girlguidessa.org.au

Thanks to Liz & Mhairi for a great session on the use of AI in the Guide Program – I certainly learnt a few things that I'm going to put into practice. If you missed this session (or any other online training) and would be interested in having it run again, please let the L & D Manager Charlotte Firth, know. Send an email to learning@girlguidessa.org.au with which session/s you are interested in.

Don't forget to keep an eye on the Upcoming Courses that you can register for. Due to grant funding, training is free, so put your name down for lots of interesting courses.

Books, Badges & the AGP with Wendy Kirk will help clarify all the options open to your Guides, **Shine on Leadership** with Karen Chatto will help you understand the new WAGGGS programs that are being introduced to new leaders, and we all need to know about them too.

Have you looked at what's new in Girl Guides Learning? There's now an activity on Neurodiversity. This activity has been written for Guide Leaders, by Guide Leaders. There's also a new updated CSCF module dated 2026-2027, which we all need to do, whether you are a new Leader or an existing Leader.

Online training run by the GGSA L & D Team is not just for those in the city. They are for everyone, especially those in our country regions. If you have a specific topic that you think others may be interested in, that we could run as an online training, please get in touch with the L& D Manager Charlotte Firth learning@girlguidessa.org.au

GRANTS UPDATE



2025-26 DSS VOLUNTEER GRANTS

Estimated cost to each Unit \$1500/annum

01.

Software packages

Mobile Device Management (MDM) software is a security tool that allows IT departments to monitor, manage, and secure employee devices—including smartphones, tablets, and laptops—via a centralised system.

The software will enable remote configuration, policy enforcement, app deployment, data protection and child safe guiding.

GGSA will be able to provide Units both metro and regional with Girl Guides apps, reports, forms and online training links from Head Office.

02.

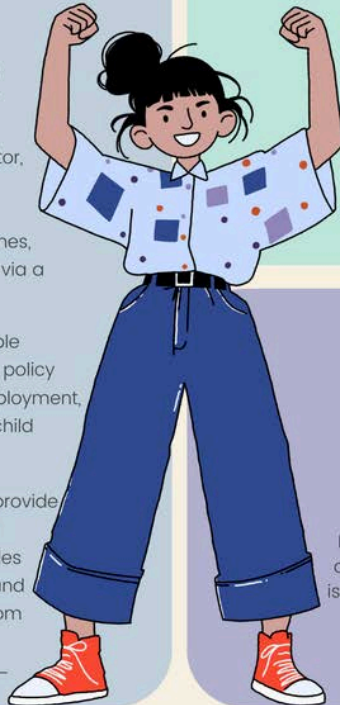
Insurance Premiums

Increasing cost of insurance premiums may cause reduced services and events. May even lead to potential drops in volunteering as liability protection concerns rise.

03.

Internet Fees

Reliable, high-speed internet is critical for modern operations. Dedicated, high-speed, and secure connectivity is essential in supporting remote teams and digital growth.



Grant will be for Girl Guides Units in the relevant MP's electorate.
The Units are made up of XXX Guides and XX Leaders/Volunteers.

Girl Guides SA Inc 311 Military Road, Henley Beach www.girlguidessa.org.au
Phone : 08 8418 0900 Email : office@girlguidessa.org.au

2025-2026 Department of Social Services Grants

Expressions of Interest have been initiated with the relevant Members of Parliament. The applications were for \$1,500 per Unit to cover the costs for software, insurance and internet fees. We have already received some rejections and acceptance to move onto the next stage. Please see the information above should Leaders and Managers be contacted by MP's in regards to the applications. If you have any further questions please contact either Mel or Rebekah.



AWARDS UPDATE

Australian Guiding Program Awards 2026

After you fill out this awards form please proceed to the online shop (<https://guideshopsa.myshopify.com/>) to order certificates and badges. We will add the information provided to the database and awards spreadsheet.

* Indicates required question

Guide's Name *

Your answer

Membership Number *

Please enter the product number

Your answer

To simplify administration and time, we are excited to introduce the online form for the Australian Guide Program Awards. This form will assist with record-keeping and entry into the database.

Please click [HERE](#) to access the form.

Once you have completed and submitted the form, please visit the online shop to order your certificates and/or badges. While we aim to process all orders within 24 hours, please note that most orders may take up to 48 hours to process. If you have any questions please contact retail@girlguidessa.org.au



Volunteer Week
Thank You
Morning Tea

Sunday 24 May
10.30am
Douglas Scrub

[Register Here](#)



GONE HOME

Eileen Emilie Dunstan - 26/8/1938 (87 years)

We acknowledge the recent passing of Eileen Emilie Dunstan, who led an accomplished life of community service with Girl Guides SA and Police Scouters.

Eileen's family has grown to seven great-great-grandchildren. Her daughter Heather Pennell joined Girl Guides, and Heather's daughter Kate Bate also became a Girl Guide for a few years. Emily Pennell who is now a Leader at Flagstaff Hill Unit, has been a Girl Guide since the age of seven. Guiding has a big part in Eileen's life, and she wanted the girls in the family to join Girl Guides too.

In 2024 Eileen was presented with 55 years of Membership for her contributions to the Guiding organisation while she attended Mandala Trefoil Guild.

Eileen also volunteered for the Police Scouters over many years. This role provides security to venues. She assisted with Carry On Guides and she even did a skit on stage one year with other Police Scouters and her granddaughters, Emily and Kate. She also volunteered as a Police Scouter for a few camps in her time, which Kate and Emily tagged along with Eileen (Nana).

If you wish to attend the funeral it will take place on Tuesday 28th April 2026 at 2pm at Harrison's Funerals in Ridgehaven followed by light refreshments and to be concluded at Hope Valley Cemetery. The funeral will be available via live streaming as well. Please keep an eye out on the Girl Guide SA Facebook page for the link. This will likely get posted on Monday 27th April.





GONE HOME



Bryan Pointon - 13/12/1932 - 27/03/2026

We acknowledge the recent passing at 93 years of our long term Guiding supporter Bryan Pointon, husband of Helen and father of Janet, Jude and Cathie. (service [link](#))

With four Guide Leaders in the family, his contribution over 60 years has reached so many Guides and Leaders. His famous large green trailer had more camping trips chalked up than many of us, and loaded with camping gear, wore a groove in the road to Douglas Scrub.

Bryan's background in heavy transport meant that many of us learnt the correct tiedown methods and how to tow and back a trailer. As a father in the heavyweight camping days, Bryan would have the task of digging the lats, but preparing those toilets got much easier when he introduced the powered posthole digger.

In many ways his practical support helped the Guide properties, particularly GTS Dolphin and Douglas Scrub, for which he served as a member on the committees, as well as attending many working bees. He was also active with Apex and Rotary.

Thank you Bryan.

May this serve as a reminder to thank our own supporters who help us in our Guiding interests.



CALLING ON ALL +13 GUIDES

GIRL-LED CAMP

ADULT
SUPPORT

YOU PLAN – YOU LEAD

AGES 13–17 YRS

- Choose your challenges ●
- Lead the Activities ●
- Work as a team ●
- Reflect and achieve ●

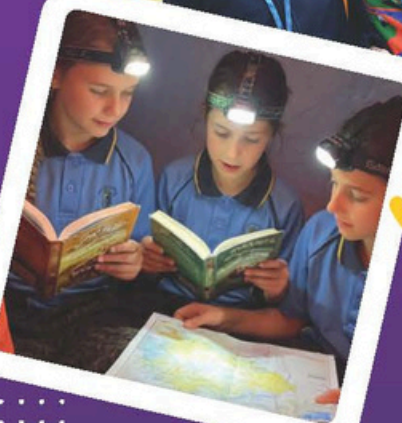
22–24 MAY 2026

DOUGLAS SCRUB

- Create your camp
- Lead your patrol and explore
- Cook your own meals
- Work as a patrol
- Meet other +13 members
- Earn badges

**REGISTER
NOW**

**STEP UP – STAND TALL
YOUR CAMP, YOUR WAY**





TRAIL JAM

4 FAVOURITES FOR 2026

- The beaches and cliffs of **Canunda National Park**, Limestone Coast (2 hrs)
- The **South Para Reservoir Trail**, Williamstown (1.5 hrs with an optional extension)
- The **Lizard Rock Hike** of Para Wirra Conservation Park, Adelaide Hills (2 hrs)
- Beachcombing and wetlands walk at **Encounter Bay** Port Elliott, Fleurieu Peninsula (2 hrs)
- Your favourite hike

The 4 Favourites Hikes will be led by one of our members.

Canunda National Park: Barbara millicent@girlguidessa.org.au

South Para Reservoir: Amanda gawler_jillaroo@girlguidessa.org.au

Lizard Rock: Brooke: Prospect-Unit@girlguidessa.org.au

Encounter Bay: Emma victorharbor@girlguidessa.org.au

If you would like to join one of these hikes, please email the contact person before Easter.

Kit List for Hiking

In a comfortable light backpack :

Full water bottle

Lunch and snacks

Raincoat

Warm jumper

Sun hat

Personal first aid kit in a Ziploc bag (insect repellent, sunscreen, small hand sanitiser, bandaids)



Wear

Good quality enclosed walking shoes

Guide top

Long pants

Warm jumper/hoodie/similar (or carry it in your backpack)





GIRL GUIDES
AUSTRALIA
SOUTH AUSTRALIA

2026 ACCOMMODATION RATES

Units & Regions



1 January - 31 December 2026



Douglas & Paklease
Houses

DOUGLAS SCRUB - INDOOR

includes use of eastern half of Forrest Reserve & campfire circle (seasonal)

\$20 pp/night

sleeps 72 (across both houses)
minimum charge \$400/night
minimum duration may apply



Blewitt Springs, McLaren
Vale

DOUGLAS SCRUB - OUTDOOR

PINE FLAT | KEN MAGUIRE RESERVE | | FORREST RESERVE

\$10 pp/night

Extras:
Pine Flat Cookshed \$25
Trefoil Shelter \$50 (incl day visitors)
City in the Trees \$20/platform

no minimum \$\$ spend
or nights apply



Largs North, Adelaide
region

GTS DOLPHIN

includes use of water activities equipment*

\$20 pp/night

sleeps 44

Oct-March: min. \$400/night (min. 2-night stay)

April/May/Sept: \$400/night (min. 1-night stay)

June-Aug: \$300/night (min. 1-night stay)



Port Vincent, Yorke
Peninsula

TUCKERWAY

\$20 pp/night

sleeps 53

Oct-March: min. \$400/night (min. 2-night stay)

April/May/Sept: \$400/night (min. 1-night stay)

June-Aug: \$300/night (min. 1-night stay)



DAY USE

FREE use of Douglas Scrub grounds during Guide meeting times
TREFOIL SHELTER at Douglas Scrub: \$50/day (incl all day visitors)
GTS Dolphin for water activities: \$10pp (incl equipment)

all day use is subject to availability

Failure to follow cleaning checklist may result in a cleaning fee.
These fees also apply to Scouts SA bookings.

HOW TO BOOK



(08) 8418 0900 (M-F)



properties@girlguidessa.org.au

2027 pricing will be published by 1 December 2026

