



# GIRL GUIDES SA FRIDAY FRENZY

Friday 19 June 2026

## FROM THE STATE COMMISSIONER & STATE EXECUTIVE OFFICER

Hi Everyone,

We had the privilege of attending the Trefoil SA AGM for 2026 and hearing about some of the amazing achievements from last year. One message that came across very clearly is that many small tasks done by a large number of people creates many amazing outcomes for our organisation. Thank you to each and everyone of our Trefoil members who have done your small part in contributing to Douglas Scrub projects, Outreach funds to send members to Jamborees and Archives (safe to say the best collection of Girl Guide memorabilia in the country). These long time members completed their CSCF training in person.

You will see a renewed focus around Child Safe Child Friendly, and while we know every GGSA volunteer takes the safety and wellbeing of every girl and young person in their care very seriously we also know that at times we need to relook at and refocus on this very important topic. Creating and maintaining a child safe, child friendly environment is not just something we talk about—it's something we actively demonstrate every day through our actions, our leadership, and our commitment to best practice.

As part of this commitment, we are asking all GGSA volunteers to complete the new online training module by 31 August 2026. This can be accessed via this link - <https://girlguideslearning.org.au/topclass/login.do> and select South Australia. Please click [HERE for Girl Guides Learning New User Instructions.](#)

This training helps us:

- Stay aligned with legislation and Girl Guides Australia requirements
- Strengthen our understanding of child safety practices
- Ensure consistent, safe experiences for girls across every unit, activity, and event

CSCF training is not a one-off task – it is an essential part of being a Leader or Volunteer in Girl Guides. It supports confident decision-making, reinforces boundaries, and helps us create environments where every girl feels safe, respected, and empowered. It also ensures our Leaders are working in a safe environment.

The module takes around 30-40 minutes, and while it can be completed online, we ask that, if you would like to attend an in-person session, please e-mail [sc@girlguidessa.org.au](mailto:sc@girlguidessa.org.au) and we will arrange the session.

However, we also acknowledge that while everything is focussed around the youth we could not do this without our volunteers and so you will find Adult Exec positions advertised below. We have focused on this area first and we would encourage anyone that is interested in any of them to speak to Deb or Bev to hear more.

We thank you for the vital role you play in keeping Girl Guides South Australia a safe and welcoming place for all.

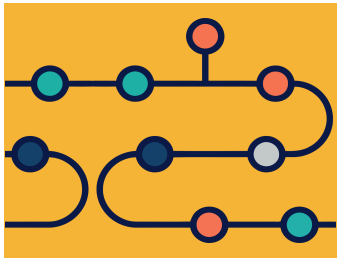
Kind regards

*Bev & Mel*

State Commissioner and State Executive Officer



We are looking for Expressions of Interest from anyone who wants to be part of the camp. Please complete the attached form : [State Camp 2027 - Expression of Interest](#). Please reach out; we cannot make this initiative successful without a dedicated team of people.



# CONNECTING THE AGP

Welcome back!

In the last session about the AGP Process, we explored some practical ideas how to help Guides DISCOVER and DECIDE their activities. We hope this has started to assist you with your Guides.

You recall the AGP Process?

**DISCOVER    DECIDE    PLAN    DO    EVALUATE**

This time we explore ideas how to plan activities and then evaluate how those plans went.

## PLAN

Let's now take a look at some tools and ideas to help you all, maybe in small groups or Patrols. These ideas are just the start of the journey - build your skills and discuss with others.

- Build a template for Patrols and Guides to use in planning- something similar to that below
- Have you used a mind map before?
- Use a whiteboard, paper or be creative on a tablet and create a checklist
- Draw pictures and assign people to the tasks
- Check out TWINKL or other resources on Google  
(An example below)

### Planning a Journey

How to travel from \_\_\_\_\_ to \_\_\_\_\_

Type of transport	Distance	Estimated time

What ways can you think of to help Guides plan their activity?

Could you help to motivate Guides by helping with a planning sheet, so they capture everything then need to be aware of.

Consider the following:

What the activity is

Who is going to do what

What are the outcomes

Is it a safe activity and what do they need to do?

Consider if adult help is required

What equipment and cost might be involved

Make sure the Patrols plan looks reasonable, and don't forget to support the Patrol with questions/ solutions. Sometimes things are missed or the Guides might need to talk through their ideas with an adult. It's not always easy remembering everything!

There are a couple of examples for you to consider in this edition

## **Do**

Wahoo - let's get into the planned activity! Have fun!!

## **Evaluate**

Time to review and reflect on the planned activity. Why undertake the evaluation stage?

This could be a simple activity or it could be an in-depth discussion, but here are some other ways to reflect on the activity or the plan:

- Thumbs up = great    Thumbs down = maybe could have been better
- Choosing a colour to indicate how a Guide thinks she went with that activity
- Small group discussion or working in a pair
- Use a balloon or ball to throw to each other and use words for a person to describe their experience
- Run through the planning sheet and question anything that needed to change with the Patrol
- Use the Unit to present any activity outcomes

What ways can you think of or that you use to help Guides reflect on their activity?

You may also like to look at the Awards Book to understand how to Self Assess and Peer Assess. This is also another tool to reflect or Evaluate activities and plans.

Use this process – it will be extremely helpful!

**DISCOVER    DECIDE    PLAN    DO    EVALUATE**

### Planning Sheet

My challenge is \_\_\_\_\_ Name \_\_\_\_\_

How I am going to complete my challenge :

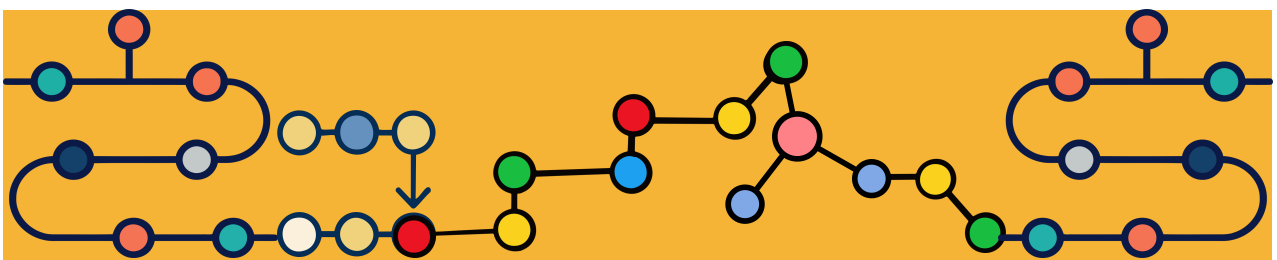
Discover    Look at all the challenge/s I could try \_\_\_\_\_

Decide    Which at all the challenge/s I could try \_\_\_\_\_

Plan    What do I need to do? \_\_\_\_\_  
Who do I need help from? \_\_\_\_\_  
What equipment do I need? \_\_\_\_\_  
Are there forms I need to fill in? \_\_\_\_\_  
What will I learn? \_\_\_\_\_  
How Long will this take? \_\_\_\_\_

Do    Undertake my challenge/s

Evaluate    What did I enjoy about my challenge? \_\_\_\_\_  
Was it a challenge to me? \_\_\_\_\_  
What would you do differently next time? \_\_\_\_\_  
Did I do a great job? \_\_\_\_\_  
What did I learn? \_\_\_\_\_



# POSITIONS VACANT



## **Join the Adult Executive Team**

### **Shape the future of Guiding**

Girl Guides South Australia is seeking passionate, skilled volunteers to join our **Adult Executive Team**. These leadership roles are an opportunity to support adult volunteers, strengthen our organisation, and help deliver safe, high-quality Guiding experiences across the state.

The Adult Executive Team provides strategic leadership, operational oversight, and organisational continuity, ensuring volunteers are supported and programs are delivered safely and consistently.

### **Positions**

We are currently inviting applications for the following roles (indicated by Role Open) :

#### **Learning & Development Lead (Role open)**

*Caretaker of role: Charlotte Firth (Charlottes term has ended and we thank her for the commitment she has shown)*

Lead the development of training and learning pathways that build confidence, capability, and consistency across adult volunteers and across different learning mediums. Help build your team of trainers across the State and across all age profiles and training mediums.

#### **Wellbeing & Inclusion Lead (Role open)**

Champion a culture where volunteers feel safe, supported, valued, and included, with a strong focus on wellbeing and sustainable volunteering.

#### **Lead Outdoor Assessors (Role open)**

Oversee outdoor assessors and support safe, high-quality outdoor activities, ensuring consistent standards and strong volunteer capability.

### **Lead Mentors (Role open)**

Strengthening the mentoring framework to support leadership development, confidence, and connection across the organisation.

### **External Appointment – Wellbeing (Role open)**

Provide specialist expertise to support volunteer wellbeing, psychological safety, and sustainable practices.

### **External Appointment – Adult Mentoring & Learning (Role open)**

Bring professional insight to enhance mentoring and learning systems and support volunteer development.

### **Who We're Looking For**

We welcome applicants who:

- Are committed to supporting and empowering volunteers
- Have leadership, communication, or specialist skills relevant to the role
- Value collaboration, inclusion, and continuous improvement
- Are aligned with the Guiding ethos of service, respect, and shared leadership

### **Why Apply?**

By joining the Adult Executive Team, you will:

- Help shape the experience of volunteers across South Australia
- Contribute to a positive, supportive organisational culture
- Build leadership skills and expand your professional experience
- Be part of a collaborative, purpose-driven team

### **Commitment**

- Exec meetings are held bi-monthly, with additional involvement as required for projects and planning and team meetings
- Some roles will require collaboration with teams and other portfolios

## How to Apply

To express your interest, please submit and we will contact you to explore more detail on the roles and responsibilities

- A short statement (1–2 pages) outlining:
  - o Your interest in the role
  - o Relevant skills and experience
  - o What you would bring to the Adult Executive Team
- Your current Guiding role (if applicable)

✉ Applications should be sent to: Deb Jakes on [ascl@girlguidesssa.org.au](mailto:ascl@girlguidesssa.org.au)

📅 Applications close: As roles are filled

## Further Information

For more information about these roles, please contact:

✉ Deb Jakes on [ascl@girlguidesssa.org.au](mailto:ascl@girlguidesssa.org.au)

## Make a Difference

Your leadership can help create a stronger, more confident volunteer community and support young people to thrive through Guiding. Help shape the future of the organisation for generations to come.



The South Australian Government Screening Services, which provide Working with Children Checks (WWCCs), will be closing the application portal for an upgrade. This closure will take place from 5 PM on Friday, June 19, until Monday, June 29, 2026, when the new system is set to launch. Please note that during this period, you will not be able to submit or receive WWCCs.

Despite the transition to the new system, there will be no impact on already submitted or finalised employee or volunteer checks. The Screening Unit will continue to provide safeguarding services during this time, including ongoing monitoring activities.

## **AGINFO 13 (2026)**

### **Child Safe Child Friendly: Frequently Asked Questions Update**

The Child Safe Child Friendly (CSCF) Frequently Asked Questions (FAQs) Guidance Note has been updated and is now available online:

[Guidance Note: Frequently Asked Questions – Child Safe Child Friendly](#)

***Please share the update as widely as possible.***

#### **What has been updated?**

Some of the original questions and answers remain, and new FAQs have been added which relate to:

- How the CSCF Framework applies day-to-day
- Screening requirements for adults who want to volunteer or work within Girl Guiding
- Working with Children check requirements specific to:
  - o support workers
  - o parents
- Communication methods to use when contacting Guides outside of Guiding activities
- Supervision ratios

#### **Who would find this useful?**

The updated FAQs provide easy-to-access answers for all Adults in Guiding. They will be particularly useful for Managers, Leaders and SGGO staff responsible for CSCF screening.

#### **I have FAQs for the next version, who can I contact?**

If you have ideas for additional FAQs for future versions of this Guidance Note, please send them to [katef@girlguides.org.au](mailto:katef@girlguides.org.au)



## **AGINFO 14 (2026)**

### **GGA Committee Member**

GGA is seeking expressions of interest for the appointment of a young woman to the Australian Guiding Committee of the GGA Board.

#### **Essential Skills Required**

Committee members must:

- Be under 30 years of age at time of appointment to the Committee
- Have an understanding of the Australian Guide Program
- Be a current active member of their State Organisation.
- Have a working appreciation and understanding of the requirements and responsibilities of sitting on a Board committee of a not-for-profit organisation.
- Support the vision and ethos of GGA and the World Association of Girl Guides & Girl Scouts (WAGGGS)
- Demonstrate a commitment to GGA's Code of Conduct and GGA policies

Girl Guides Australia welcomes applications from diverse candidates.

#### **Remuneration**

This is a voluntary role. Committee members are not remunerated.

#### **Further Information**

Please provide an Expression of Interest of no more than 2 pages outlining what skills and experience you would bring to the Australian Guiding Committee. Send to [applications@girlguides.org.au](mailto:applications@girlguides.org.au)

#### **Closing Date**

Closing date for the EOI is **Friday 11th July 2026**

# LEARNING & DEVELOPMENT NEWS



to Isabelle Stein of Knightsbridge Narwhal Guides and Patricia Pomery of Carry on Guides on completing their Leadership Qualifications.

A new Leadership Qualification Passport is now available. If you have only just started and your passport is dated before April 2026, and you would like to change to the new passport, please ask your Mentor for a copy of the passport and learning plan.

All new Leaders coming in will be sent the new versions from Guide House once they have completed their compliance requirements.

Are you aware that you can now access our GGSA resources site via the GGSA website? Click on MyGGSA and scroll down to the bottom. You will need the information from the June 5 edition of Friday Frenzy to log in.



The recent Conduct a Camp training has raised a few questions. So, here's a few FAQ's that might help answer them.



I want to gain my camping qualifications what do I need to do?



The first thing you need to do is to get the Conduct a Camp module booklet. It can be downloaded here. Then you need to be linked to an Outdoor Skills Assessor (OSA).



I have leaders who I work with in my unit who are camp qualified. Can one of them be my OSA?



No. The OSA needs to be someone who is impartial and doesn't know your skills. However, the unit leaders you work with can certainly help you to learn skills – use them as camping skills mentors! They will probably be more than happy to pass on their skills and knowledge to you.



How do I get an Outdoor Skills Assessor?



Ask your Region Manager for an Outdoor Skills Assessor (OSA) to work with you on the module. Your manager has a list of all the OSA across the state. Your OSA doesn't need to be somebody in your region or district. It could be somebody near the campsite where you are planning on doing your assessment camp. You can contact them via email or phone and have meetings via Teams.



I have missed the conduct a camp training – do I need to wait for the next one before I can start on the booklet?



No. There is a section of the booklet called Camping Basic Skills that needs to be completed before you attend camp training. You can work on this section. Don't forget that you also have leaders that can help you learn any skills such as knotting. You will need to arrange a catch up with your OSA so she can sign off these activities once you have shown her evidence that they are completed.



What sort of evidence are you talking about?



Evidence can be photos of things that you and the Guides have done, third-party reports from the leaders you work with or the girls themselves or demonstrating the skill to your OSA for example.



The booklet says that I need to go to camp as a member of staff. Do I have to do this with other units in my district or region?



No, you do not need to go camping with units from your district or region to gain this experience. It is better to go camping with lots of units as each unit camps in a different way depending on the leader. By going camping with units outside of your own area, you will build your Guiding network and pick up more tips & tricks.



I have lots of camping experience as I was a guide AND I've been on lots of camps as an adult. Do I have to do the training?



Yes, you do need to do the training as only a small portion of it can be done as Recognition of Prior Learning (RPL). You will find this information in the booklet. The L & D team certainly recognise that many people have lots of different camping skills but while you may have these skills yourself, can you teach them to others, especially girls? We are looking at ways to make the training more relevant to those with lots of experience, but we need to keep within the Girl Guides Australia requirements.



I know I need to have a camp qualified leader on camp, but why do I need to have them?



They are there to support you and in case something happens to you, and you need to leave the camp site for an emergency. They can take over until you get back.



I have put the camp qualified leader as the Leader in Charge (LiC) on my OUT.01 form and on my Risk Assessment Plan (RAP) for my assessment camp. I have been told that this is incorrect so what is the correct information I should put on my forms?



You need to put yourself as the LiC as you are running the camp. They are there to support you, not run the camp.



What happens if I fail my assessment camp?



You cannot 'fail' an assessment camp as there will always be things that you have done well that your OSA will sign off in your booklet. Your OSA will give you feedback on your camp and then together you can decide on the next steps. Just like when you completed your leadership training there is no right or wrong way to do things and sometimes it takes a little while to complete everything.



I'm not feeling very confident but want to take the Guides to camp. Can I have a camp without being camp qualified?



Yes, you can have a practice camp. You will need to still run the camp as you would for your assessment camp but without the visit from the OSA, unless you would like her to visit to help you work out what areas you need to concentrate on to improve your skills. A camp qualified leader will need to be on staff. You can have as many practice camps as you like.

**MOUNT GAMBIER AND MILLICENT GUIDES AT THE MILLICENT MET!**

# THE MILLICENT MET



**LIMESTONE COAST GIRL GUIDES IN ACTION!**

# EARTHKEEPERS CAMP



## Earthkeepers Camp

AGES: 9 – 11 years

DATE: 25th – 27th September 2026

VENUE: Douglas Scrub Campsit

COST: Youth \$140 Adult \$65

CLOSING DATE: Friday 4th September 2026

Earthkeepers is an exciting, and fun environmental education camp. There is drama and mystery! You are invited to become an Earthkeeper in the magical setting of a “Lab” that belongs to a mysterious, unseen character known as EM.

An Earthkeeper carries a key ring with 4 keys representing Knowledge, Experience, Yourself and Sharing. Girls and Leaders earn two keys in camp.

A Leader needs to accompany girls on camp and then help them to gain their last two keys after camp. As a Leader you get to join in the magic too!

As an Earthkeeper you will become more in tune with the earth.

The Earthkeepers Team provides the whole camp program, catering, organisation etc. Leaders need to arrange transport to and from camp and assist with duties. No camping qualifications are required by the Leaders attending.

Accommodation is indoors but all activities are outdoors.

Registration is open – click [HERE](#). Letters to parents and Leaders plus ADM27 forms will be sent out to those registered. Don't miss out as numbers are limited.

Contact Dr Michelle Stone for more information on 0403 435 155 or [earthkeepers@girlguidessa.org.au](mailto:earthkeepers@girlguidessa.org.au)



## **AGOPS 08 (2026)**

### **National STEM Train the Trainer Workshop (In person)**

Girl Guides Australia has received funding to deliver an in person National STEM Train the Trainer Workshop through the CSIRO Education and Outreach Program, supported by the BHP Foundation.

We are seeking two Trainers from each SGGO to attend a 2-day STEM Train the Trainer Workshop facilitated by CSIRO.

This initiative builds on the CSIRO STEM pilot program delivered by Girl Guides Victoria (GGV) and aims to further strengthen STEM capability across Girl Guides Australia.

#### **Workshop Details**

- Dates: 17–18 October 2026
- Location: Venue near Sydney Airport (details to be confirmed)

#### **What's Included**

- Return flights
- Airport transfers in Sydney
- Accommodation for 1 night (2 nights for trainers travelling from WA)
- Meals: Breakfast, Lunch, Morning and Afternoon tea.

#### **STEM Trainer Selection Criteria**

- Demonstrate an interest in STEM
- Commit to delivering two STEM workshops (designed to develop confidence in Leaders/othervolunteers to facilitate STEM activities within Guiding programs) within their SGGO over the followingcalendar year
- Agree to:
  - o Provide feedback and reporting
  - o Participate in a GGA National STEM Working Group to support ongoing program development

Please complete the expression of interest form - [Expression of Interest: STEM Train-the-Trainer Workshop \(In-Person\) – Fill out form](#)



## Service Opportunity for Guides

Homemade Cards for Seniors Australia has been operating for nearly two years and has donated over 100,000 cards to date. We are seeking support in the form of handcrafted cards to spread smiles to seniors. Cards can be made in any shape, size, or style and should be centered around four themes that we collect at specific times of the year:

- Birthday (mid-August)
- Christmas (mid-November)
- Easter (mid-March)
- Thinking of You (mid-May)



Each card should include a sentiment inside, which can be handwritten or stamped, and should be signed by the card maker. We also encourage including our logo, available through a stamp set at Homemade Cards for Seniors - [Snazzi Scrappin'](#). The cards are then donated to seniors through Meals on Wheels, at-home service providers, or aged care facilities to bring smiles to their faces.

Guides may want to create handmade cards for Seniors during a meeting and donate them to the organisation mentioned below. Linda MacGillivray has a set of stamps available for borrowing if needed, but the main focus is for your Guides to decorate the card fronts. These cards can bring great joy!

For more information, contact Linda MacGillivray on 0407 729 457.

For additional information, visit : [Homemade Cards for Seniors Australia Group](#), email : [homemadecardsaus@gmail.com](mailto:homemadecardsaus@gmail.com), or contact Wendy at 0490 700 256.



# OLAVE NEWS



## **OLAVE Purple Activity Shirt and OLAVES South Australia Badge**

SA State Olave initiative, the OLAVE Purple Activity Shirt has been designed to encourage and identify GGSA members aged 18-30+. This piece of clothing sparks conversation about Olaves and young members across the state, celebrating the idea of Guiding beyond youth membership and connecting people across all stages of Guiding. (open to youth members to purchase aged 16+).

**Material:** Sublimated Polo Shirts (Eyelet Standard Cool Dry fabric)

The GGSA Olaves now have a Swap Badge to put on your Camp Blanket. SA State Olave initiative, designed to encourage and identify GGSA members aged 18-30+.

The Purple Activity Shirt is \$50, Olave SA Badges are \$4.00 each or you can purchase in bundles. Bundle 1 - 5 badges for \$17.00; Bundle 2 - 10 badges for \$30.00 and Bundle 3 - 20 badges for \$30.00.

Get your orders in before 27 June 2026, both the shirt and badge are available to GGSA Members on the GGSA Online Shop. Please use code : [26OlaveSA](#) to order.

Come along to GTS Dolphin  
Chill, Chat and

# **CELEBRATE GIRL GUIDES SA VOLUNTEERS**

Saturday 4<sup>th</sup> July, 2pm- 5pm

43 George Robertson Dr, Largs North

**Let's spend some time together for  
Team building activities with a creative flair**

**RSVP BY MONDAY 22<sup>ND</sup> JUNE TO DEB AT**

**[ASC1@GIRLGUIDESSA.ORG.AU](mailto:ASC1@GIRLGUIDESSA.ORG.AU) (INCLUDE DIETARY REQUIREMENTS)**

## Alkira's 50 Years of Guiding **CAMPFIRE**

**SUN 26<sup>TH</sup> JULY**

**5PM - 7:30PM**

**FLAGSTAFF HILL SCOUT AND GUIDE COMPLEX  
161 BLACK ROAD, FLAGSTAFF HILL**

*Everybody is invited to celebrate with Dover Gardens  
Leader Alkira as she marks her 50 years of Guiding. Come  
along and sing with a Leader who loves campfires and  
wants to share this milestone with you all*

**BYO: Dinner, Water Bottle,  
Chair/Stool and Camp Blankets  
WITH YOUR SINGING VOICES READY!**

RSVP to [dover@girlguidessa.org.au](mailto:dover@girlguidessa.org.au) by Monday 20th July





## Feedback wanted!

Have a look at Girl Guides Sharepoint site and let us know if there are any changes that need to happen.

If the information is wrong or needs to be an upgrade in a page. If you see something that doesn't make sense or you have general feedback about the site - Let us know!

We want the site to be somewhere that members go to so they can find the information they need.

To login click [HERE](#) and use :

Account : [resources@girlguidessa.org.au](mailto:resources@girlguidessa.org.au)

Password : Members21

Send the feedback to : [asc2@girlguidessa.org.au](mailto:asc2@girlguidessa.org.au)



## Susan Arthur revisits Henely Beach Guide Hall

Susan Arthur recently visited Guide House on a 'walk down memory lane' and found her Queen's Guide still listed on the wall. She showed us her comprehensive photo albums of times as a Brownie, Guide and Ranger at Henley Beach,

Reminder from the Archives that we are collecting images of any award honour boards that you may have in your halls, in storage or visible in photos.



We are inviting Expressions of Interest (EOI) for volunteering in Parcel Minding at the Royal Adelaide Show from September 5 to September 13, 2026. If you would like to participate in Parcel Minding or participate as a Gabi Guide, please click [HERE](#) to complete the EOI form.

If you have any questions or would like further information please contact :  
[royalshow@girlguidessa.org.au](mailto:royalshow@girlguidessa.org.au)

ROYAL ADELAIDE SHOW

## GIRL GUIDES ART COMPETITION REGISTRATION

**CLOSES 26<sup>TH</sup> JUNE**

Submit registrations to enter this year's competition and win prizes and showcase Guides' art.

VISIT:  
[www.theshow.com.au/competitions/girl-guides](http://www.theshow.com.au/competitions/girl-guides)

**7  
DAYS LEFT**

# 2026 CALENDAR

1	2	3	4	5	6	
7	8	9	10	11	12	13
14	15	16	17	18	19	20
21	22	23	24	25	26	27

Here is how you can access the calendar:

- Visit the calendar via the [weblink](#) anytime
- Copy & paste this URL & save it on your computer

<https://teamup.com/ksmwdggaogxy86dnjr>

Stay connected, informed and involved throughout the year!